



# Love's Farm News



Kay, Sarah, Sandy and the children from the Round House Pre-school celebrate their Outstanding OFSTED report.

## Outstanding Report for Round House Pre-school

The Round House Pre-School on School Drive, Love's Farm was inspected by OFSTED on 12 December 2016 and rated as Outstanding in all key areas. The inspector noted that children are highly motivated and excited to take part in activities, staff successfully accommodate children's preferred ways of learning and parents speak

highly about the pre-school.

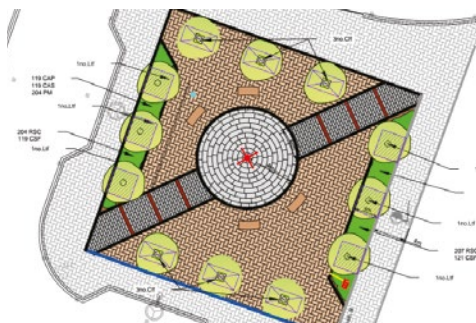
The Round House Pre-School is run by the Pre-school Learning Alliance and has 49 places for two, three and four-year-olds. Manager Sarah Walker said, "I am so proud of the whole team on our Outstanding OFSTED result and for the opportunities the setting gives to the children who attend the pre-school."

## Station Square Set for Completion

Station Square is set to take shape after years as a building site. A decorative lighting column in a stone paved circle will form the centrepiece of the space, surrounded by wooden benches and trees.

The path through the square will feature blocks engraved with a timeline of Love's Farm, beginning in the Neolithic period and continuing through to the opening of the railway bridge in 2014.

Construction is due to begin at the end of January and will be followed by work to complete the remaining unfinished roads, including Great High Ground.



Plans for Station Square include benches and trees

## What's On for Parents at Love's Farm House

There is so much going on here at Love's Farm when all the commuters have gone to work and the kids are at school. The Farm House provides a hub for new parents. Activities include Baby Sensory on Tuesdays, Hartbeeps on

Mondays and Wednesdays, Starlings on Wednesday afternoons and Little Loves on Thursdays. The health visitors attend the Starlings group fortnightly for baby weighing. You can borrow library books and visit the cafe on Tuesday, Thursday and Friday. It's a great place to meet new people, especially for new parents. Visit [www.facebook.com/lovesfarmhouse](http://www.facebook.com/lovesfarmhouse) or see the What's On calendar on the back page for more information.

*Eleanor Babbington*

## Application for Parking Restrictions on Love's Farm

The Love's Farm Community Association (LFCA), with support from local councillors and the developer, Gallaghers, have submitted an application to Cambridgeshire County Council to implement parking controls on Love's Farm.

This is based on on-going feedback and the LFCA survey that residents completed in 2015. The following is an extract from our application:

"Parking on roads in Love's Farm presents a danger of collision and congestion due to narrow roads. It causes a danger to children and adults attempting to cross the road due to limited visibility for motorists. It also presents a risk that emergency vehicles may not be able to respond in an emergency due to obstructions... there has been a significant increase in parking since the

footbridge giving access to St Neots station was opened nearly 3 years ago.”  
 Cambridgeshire Highways have recommended restrictions similar to those proposed for the Longsands Road area; these will apply to all roads to be adopted by the highways authority on Love’s Farm: (1) double yellow lines on bends and dangerous areas (2) elsewhere, single yellow lines, with a one hour restriction during the day (3) limited areas of no restriction.

Julie Wisson (our County Councillor) and I presented the scheme to the Cambridgeshire Local Highways Initiative (LHI) panel on 11 January. It was well received – especially the safety

aspects and the proposed financial contribution from Gallaghers – but we will need to wait and see how it is prioritised against other schemes. We should receive an answer on or after 13 March. If agreed, there will be a further consultation with residents, with target implementation during 2017-18.

There is also a separate proposal before Cambridgeshire County Council to build a new car park near the station which, if implemented with parking controls, will relieve parking in residential streets.

Any comments or questions please contact [parking-group@ourlovesfarm.co.uk](mailto:parking-group@ourlovesfarm.co.uk) or your local councillors.

*David Wells (Town Councillor)*

## FAMILY PHOTOGRAPHY

CAROLINE ANN PHOTOGRAPHY

*free print  
quote  
‘Loves Farm’*



*Mini Sessions . Family . Children . Newborns . Modelling headshots  
 At-home, location and studio-based portraits - capturing the heart of your family*

FOLLOW US AT [FACEBOOK.COM/CAROLINEANNPHOTOGRAPHYUK](https://www.facebook.com/carolineannphotographyuk) FOR  
 VALENTINES, MOTHERS’ DAY & EASTER OFFERS. GIFT VOUCHERS AVAILABLE

0770 327 4439 | [CA\\_PHOTOGRAPHY@ICLOUD.COM](mailto:CA_PHOTOGRAPHY@ICLOUD.COM) | [WWW.CAROLINEANNPHOTOGRAPHY.CO.UK](http://WWW.CAROLINEANNPHOTOGRAPHY.CO.UK)

## Meet the bpha team

**Tuesday 7 February, 2-4:30pm**

You are warmly invited to meet your new bpha Home Agent Sarah Keena and Community Development Officer Kathryn Beck. Just pop into our informal drop-in session on Tuesday 7 February, 2pm to 4.30pm at Love's Farm House to discuss any housing issues or share your ideas to improve your area.



Kathryn Beck (left) and Sarah Keena from bpha

## Half Term at the Farm House

There's plenty going on at the Farm House this half term. Switch Café will be open as usual on Thursday and Friday from 10am to 2pm offering yummy cakes, hot and cold drinks and light lunches. Our Micro Library is always available during our opening hours, so come along and borrow a book or relax in the foyer with a magazine.

**Baby & Toddler Rhymetime**

**Friday 17 February, 10.30-11am**

St Neots Library's Rhymetime group will be relocating to Love's Farm House during

school holidays. Come along for singing and rhyming fun for babies and toddlers up to two years. No need to book.

**Cinderella Workshops**

**13 and 16 February, 10am-1pm**

Join the Glass Slipper Princess for crafts, dancing, fun and games. £10 per child, age 3+. These workshops sell out fast so please call 07825 331453 or email [amy@limelightentertainmentuk.com](mailto:amy@limelightentertainmentuk.com) to join the waiting list.

**Paediatric Basic Life Support Course**

**Wednesday 15 February, 7-9pm**

This two-hour course run by ABC Life Support is a practical training session for parents and carers. It covers Recovery Position, CPR and choking as well as incident management and childhood illness.

Call 0800 0467 410 or email [caroline@abclifesupport.co.uk](mailto:caroline@abclifesupport.co.uk) for more information and to book your place.

---

## Join Our Community Gardening Team

Do you like gardening? Do you enjoy being outdoors with friendly faces for a few hours now and again? If so you might consider joining a team of volunteers to look after the Love's Farm House community garden. We always need volunteers to work with our garden team on jobs such as pruning shrubs, fertilising, planting summer beds and generally making the garden a welcoming and safe



Maria and Caroline building the willow tepee

place for all. No experience necessary and no regular commitment required. We'll let you know when we meet and what work is planned for each session; then you can decide to join in whenever you feel you can contribute. Please contact Maria at [mrrsrss@gmail.com](mailto:mrrsrss@gmail.com).

## It's Party Time!

Love's Farm House is available to hire for private parties. You get the whole building including the hall, kitchen, garden and cafe area, plus the music system and disco lights. Children's parties are £65 for two hours (plus 30 minutes either side for set-up and clear away), at 12-3pm or 3-6pm on Saturday and Sunday. Saturday evening hire is £200



Ain't no party like a Love's Farm party!

for 6pm until midnight. Please call Jenny on 01480 262626 or email [bookings@lovesfarmhouse.co.uk](mailto:bookings@lovesfarmhouse.co.uk) to book.

## What's New at Love's Farm House

### Love's Farm Ladies

#### Wed 22 February, 8:30pm

The Women's Institute (WI) has a new group at Love's Farm House, meeting on the third Wednesday of the month at 8:30pm (although the next one falls on 22 February). All ladies aged 18 and over are welcome.

The WI is all about inspiring women and providing a rich source of experiences, knowledge and skills. It's a chance to catch up with friends and make new ones, perhaps learn new skills, and for some, to get involved in campaigns.

Activities include crafts, singing, book club, quizzes, walks, theatre trips and workshops. Come and join and get involved in the way that suits you.

### Tang Soo Do Karate Club

#### Wednesdays 5.30-7pm

St Neots Tang Soo Do Karate Club are relocating to Love's Farm House from 22 February. They are a family-friendly club teaching martial arts in a relaxed atmosphere. Children (aged 6+) and adults are welcome. All grades and ages train together under the instruction of two Master instructors. Whether you want to keep fit, learn self defence, build confidence or begin

your journey to black belt, why not give it a try? £4.50 per person or £9 per family, and the first class is free. Call 07790 217170 for more information, or just come along on the night.

## Zumba

### Mondays 7-8pm

Zumba classes are now running every Monday evening at the Farm House. Zumba is a Latin-based, easy-to-follow, calorie-burning dance fitness party. £5 per class or £25 for a block of six. Contact Nicola on 07912 442622 or [nicola\\_ashby7@outlook.com](mailto:nicola_ashby7@outlook.com).

## Nia

### Mon 8-9pm, Sat 8-9am

Do you want to move more? Dance more? And have fun more in 2017? Come and join Ildi's Nia classes. New Monday evening Nia classes started in January, and classes also run on Saturday mornings. Nia draws from the wisdom of Martial Arts, Healing Arts and Dance Arts. £8 per class, with discounts for block bookings. Contact [ildiko.miklos@hotmail.com](mailto:ildiko.miklos@hotmail.com) for more information.

## Hartbeeps

### Mondays and Wednesdays 9.30, 10.30 and 11.45am

Hartbeeps now run all three of their sessions, Baby Bells, Baby Beeps and Happy House, on both Mondays and Wednesdays at Love's Farm House. Multi-sensory, musical storytelling classes for babies and young children. £6.50 per child / £3.25 per sibling, with discounts for block bookings. Visit [www.hartbeeps.com](http://www.hartbeeps.com).

or contact [annac@hartbeeps.com](mailto:annac@hartbeeps.com).

## St Neots The Bird Table

### Monday 30 Jan, 7.30-9.30pm

Calling all women SME business owners: do you ever miss being part of a team? Have a great idea you would love to share? Looking to grow your business? At The Bird Table you can work with others to grow and develop yourselves and your business through support and collaboration. Run by a professional coach. £100 for three months. Contact Charlie at [charlie@yourtimetogrow.com](mailto:charlie@yourtimetogrow.com) to book a place.



## Spotlight On... Romana Kandziora Street Reps Coordinator

### Hi Romana, please introduce yourself

Hi, I moved to Love's Farm a year ago, having previously lived in Cambridge and neighbouring villages. I used to live in rented accommodation and I finally got tired of it so I saved for a deposit and bought a shared-ownership flat on Pattison Court near the school. I got the keys exactly a year ago (end of January 2016).

### How did you get involved with Street Reps?

When I moved to Love's Farm, I was not only a first-time property owner but also

new to the estate and the town. I was looking for information regarding life on the estate and the neighbourhood but I didn't know who to ask. I checked the Love's Farm website and found information on the Street Reps. It turned out we didn't have one, so as soon as I got on my feet, I volunteered as our Rep to help new neighbours on my street make their moving in smoother and living here that little bit easier.

### **Is there a Street Rep for every street on Love's Farm?**

No, not yet. Many streets do have their representatives (the larger ones have two or more Reps) but we are still looking for Street Reps for some of the streets.

### **What do the Street Reps do?**

In short, Street Reps are a point of contact between residents and Love's Farm Community Association. We welcome new neighbours on our streets, help to build communities in the neighbourhood, deliver the Love's Farm Newsletter that you are reading and help with issues and problems that arise on our streets. Anything and everything that makes our life here better!

### **What are your experiences of being a Street Rep?**

It's a great feeling to be involved in building a closer community on the estate. However, some of my neighbours probably don't know that there is someone on their street who they can come to if there are issues they need help with — or are new to Love's Farm and would just like to chat to someone and don't know where to start. If that's the case — not just in my street but anywhere on Love's Farm — do contact your Street Rep!

### **How do I find out who my Street Rep is?**

The names and email addresses are listed on the community website: [www.ourlovesfarm.co.uk](http://www.ourlovesfarm.co.uk). There's a map of the estate and you can see whether your street has a Rep. If not, perhaps you would like to volunteer? If so, please send your details through a contact form on the website and the Community Association will put us in touch.

Also, as this is a great opportunity to do so, I'd like to say a big thank you to all the Street Reps who volunteer their time on the estate!

## **Get in touch**

**Ben Pitt** Editor / advertising enquiries

[ben.pitt@ourlovesfarm.co.uk](mailto:ben.pitt@ourlovesfarm.co.uk)

**Marcus Pickering** Chair, LFCA

[marcus.pickering@ourlovesfarm.co.uk](mailto:marcus.pickering@ourlovesfarm.co.uk)

  **ourlovesfarm**

  **lovesfarmhouse**

**Jenny Bishop** Administrator,  
Love's Farm House, 01480 262626

[jenny@lovesfarmhouse.co.uk](mailto:jenny@lovesfarmhouse.co.uk)

**Ben Pitt** Chair, Love's Farm House

[ben@lovesfarmhouse.co.uk](mailto:ben@lovesfarmhouse.co.uk)

**Helene Tame** Community Chaplain

[community.chaplain@yahoo.co.uk](mailto:community.chaplain@yahoo.co.uk)

07938 803501

# What's On

## February 2017

Monday	Tuesday	Wednesday	Thursday	Friday	Saturday	Sunday
<b>Hartbeeps</b> 9.30, 10.30 & 11.45am <b>Abacus Mental Maths Tuition</b> 5 - 6pm <b>Cubs</b> 5.30 - 7pm <b>St Neots Sewing Club</b> 7 - 9pm <b>* Zumba</b> 7 - 8pm	<b>* Farm House Coffee Shop</b> 9am - 12.30pm <b>* BPHA drop in</b> 2 - 4.30pm <b>Pilates</b> 6pm, 7pm, 8pm <b>* Loves Farm Runners</b> 8pm at the MUGA	<b>Hartbeeps</b> 9.30, 10.30 & 11.45am <b>* Love's Farm Starlings (with Health Visitors)</b> 1.30 - 3pm	<b>* Switch Cafe</b> 10am - 2pm <b>* Little Loves</b> 9.30 - 11am <b>Rainbows</b> 5 - 6pm <b>Brownies</b> 6 - 7.30pm <b>Guides</b> 7.30 - 9pm	<b>* Switch Cafe</b> 10am - 2pm <b>Junior Youth Club</b> 6 - 7pm <b>* Karaoke at the Farm House Bar</b> 7.30pm - 12am	<b>* Nia</b> 8 - 9am <b>* Lazy Breakfast</b> 9 - 11am <b>Street Dance</b> 9.30am, 10am & 10:45am <b>* Councillor Surgery</b> 10am - 11am	<b>Life Drawing</b> 9 - 11.30am <b>* Love's Farm Dog Walk</b> 10am at the Pirate Ship <b>* Kidz &amp; Sibz</b> 3.30 - 5.30pm
<b>Cinderella Workshop</b> 10am - 1pm <i>Call to Book</i> <b>* Zumba</b> 7 - 8pm	<b>Baby Sensory</b> 9.40am, 11am & 12.20pm <b>* Loves Farm Runners</b> 8pm at the MUGA	<b>* Love's Farm Starlings (with Health Visitors)</b> 1.30 - 3pm <b>First Aid for Parents</b> 7 - 9pm <b>* LFCA Committee Meeting</b> 7.30pm	<b>* Switch Cafe</b> 10am - 2pm <b>Cinderella Workshop</b> 10am - 1pm <i>Call to Book</i>	<b>* Switch Cafe</b> 10am - 2pm <b>* Rhymetime</b> 10.30 - 11am <b>* Farm House Bar</b> 7.30 - 11pm <b>* St Neots Film Club: Inception</b> 8pm	<b>Love's Farm Guides, Brownies and Rainbows Thinking Day Event</b> 2 - 4:30pm	<b>* Breakfast Church</b> 10 - 11.30am
<b>Hartbeeps</b> 9.30, 10.30 & 11.45am <b>Abacus Mental Maths Tuition</b> 5 - 6pm <b>Cubs</b> 5.30 - 7pm <b>St Neots Sewing Club</b> 7 - 9pm <b>* Zumba</b> 7 - 8pm	<b>* Farm House Coffee Shop</b> 9am - 12.30pm <b>Baby Sensory</b> 9.40am, 11am & 12.20pm <b>Pilates</b> 6pm, 7pm, 8pm <b>* Loves Farm Runners</b> 8pm at the MUGA	<b>Hartbeeps</b> 9.30, 10.30 & 11.45am <b>* St Neots Tang Soo Do Karate</b> 5.30 - 7pm <b>* WI</b> 8.30 - 10.30pm	<b>* Switch Cafe</b> 10am - 2pm <b>* Little Loves</b> 9.30 - 11am <b>Rainbows</b> 5 - 6pm <b>Brownies</b> 6 - 7.30pm <b>Guides</b> 7.30 - 9pm	<b>* Switch Cafe</b> 10am - 2pm <b>Junior Youth Club</b> 6 - 7pm <b>* LFCA Quiz Night at the Farm House Bar</b> 7.30 - 11pm	<b>* Nia</b> 8 - 9am <b>* Lazy Breakfast</b> 9 - 11am <b>Street Dance</b> 9.30am, 10am & 10:45am <b>* SMART Day</b> 11am and 2pm @ Pirate Ship	<b>* Breakfast Church</b> 10 - 11.30am <b>* Sacred Space - Living Well</b> 8 - 9pm
<b>Hartbeeps</b> 9.30, 10.30 & 11.45am <b>Abacus Mental Maths Tuition</b> 5 - 6pm <b>Cubs</b> 5.30 - 7pm <b>* Zumba</b> 7 - 8pm <b>St Neots The Bird Table</b> 7.30 - 9.30pm	<b>* Farm House Coffee Shop</b> 9am - 12.30pm <b>Baby Sensory</b> 9.40am, 11am & 12.20pm <b>Pilates</b> 6pm, 7pm, 8pm <b>* Loves Farm Runners</b> 8pm at the MUGA	Events are at Love's Farm House <b>foyer</b> , hall or <b>meeting room</b> , or <b>out and about</b> . Events with a * mean just turn up. For others, please book in advance. Visit <a href="http://www.lovesfarmhouse.co.uk">www.lovesfarmhouse.co.uk</a> or call 01480 262626 for more information.				

