



Love's Farm News



Cornelia Sbircea, Helene Tame, Becky Symms, Lynda Cronin, Roxy Andrews and Sam Claussen (L-R) picked up the New Venture award, along with Kathryn Pickering, Paula Phipps and Di and Steve Briggs, for their Little Loves group

Celebrating Love's Farm Community Champions

Many congratulations to the winners of the Love's Farm Community Champion Awards 2016. We tried a different approach to the Love's Farm Community Association (LFCA) and Love's Farm House AGMs this year and combined them into a quiz. We had rounds on our events, dog walking, SMART days, the Farm House, street reps and even a round on parking issues! The hall was packed

and there was a great atmosphere.

The winners in full:

Bring Your Family to Work Award

The Tames

Committed to the Community

David Wells

Star Behind the Scenes Cornelia Sbircea

Going the Extra Mile Rebecca Mitton

SMART Superhero Joshua Jones

New Venture Little Loves

Love's Farm House New Years Eve Party

Sat 31 December, 7pm-1am



Join us to celebrate the New Year with a night of Hollywood glamour.

There will be live music by West End musical director Chris Hatt (Guys and Dolls, Billy Elliot), dancefloor classics in the hall, karaoke and lots of glitz and glam.

Tickets include a Hollywood-themed drink on arrival and are £10 per adult and £5 for under 18s (must be accompanied by an parent or carer). Babies under one year go free.

Dressing up Hollywood-style is optional. Get your tickets at Love's Farm House (9am-3pm Mon- Fri) or call 01480 262626.

Carol Singing

Thursday 15 December, 6pm

Singing Christmas carols and spreading festive cheer throughout the streets of Love's Farm is now an annual tradition. We alternate between the north and south side; this time we will visit streets on

the South side. We warm up our voices at Love's Farm House, then pick up our lanterns and start on our route. All of the family welcome and there's a lovely Christmas atmosphere. If you can't make it but we are visiting your street, we will ring a bell to let you know we are there so do open your front door to say hello and listen to our carols. We then make our way back to Love's Farm House at 7:30pm for tea, coffee, mulled wine and mince pies, hosted by the 1st Love's Farm Guides. Keep an eye on Facebook for our exact route and add 15 December to your diary.



Best singing voices at the ready on 15 December

LFCA: Looking Back at 2016

At the community quiz, our Love's Farm Community Association Chair, Marcus Pickering, told us about some of the many successes this year, such as:

Events

Thanks to Emma, the monthly quiz nights are a regular fixture at Love's Farm House and there have been a number of special events, such as the Queen's birthday party and Halloween disco. Our Easter egg hunt was a big hit, as was Where's Wally and Love's Farm's



Lots of enthusiastic dancing at the Halloween Disco

scarecrow festival. This year's Big Lunch saw record numbers coming out in the sunshine for a picnic, dancing and games.

SMART

Love's Farm is kept really tidy thanks to the SMART days organised by Helene. We're always delighted to see people turn out, young and old, whatever the

weather, to pick up litter across the development and give the place a good tidy. More volunteers are always welcome – next one is Saturday 7 January. We have also successfully lobbied for additional bins to be placed on Love's Farm. A warm welcome to our new bins next to the school and the station.

Dogs

After complaints about dog mess and out-of-control dogs, LFCA set out to tackle the problem in a positive way by promoting responsible dog ownership. Under Keela's leadership, we have seen monthly dog walks on a Sunday morning. We also ran a campaign in which dog mess is marked with (biodegradable) fluorescent paint – serving the dual



Love's Farm House is Hiring

Bar and premises supervisor

£10.20 per hour

Duties include:

- Duty manager for private parties and public events
- Leading a small team of bar staff
- Enforcing licensing regulations
- Ensuring the safe use of the building while on duty

Previous bar experience essential

Hours for both posts will be dependent on the booking schedule, and will mostly be Friday and Saturday nights.

To apply for either post please send a brief CV and covering letter setting out why you believe you would be suitable for the role to jobs@lovesfarmhouse.co.uk by 12pm on Monday 12 December 2016. For more information please contact Ben on 01480 262626.

Bar staff

£8.45 per hour

Preferred skills and qualities:

- Friendly and outgoing
- Suitable judgement and confidence to enforce licensing regulations
- Good numeracy skills
- Awareness of health, safety, security and hygiene regulations

Previous bar experience desirable

purpose of helping you avoid said mess and further highlighting the problem. Volunteers have also bagged and collected numerous deposits!

Street reps

We now have Street Reps for a majority of streets on Love's Farm but still have a few gaps – so do check out the website to see if your street is covered. We have set the ball rolling with a pilot Neighbourhood Watch scheme and we will be looking at the feasibility of rolling this out to other areas in the near future.

Parking

This continues to present serious challenges on Love's Farm – from commuters parking for the station and match day parking to irresponsible parking by residents. LFCA has formed a group to seek to address the issues and continues to listen to concerns and gather evidence from residents. Our local councillors are now working to seek funding for a development-wide scheme, and significant progress has been made on this.

Live Music at St Neots Film Club

Friday 16 December, 7:30-11pm

After the huge success of St Neots Film Festival 2016, St Neots Film Club continues its residency at Love's Farm House with an evening of classic silent films accompanied by live music from jazz guitarist Mark Wingfield (www.markwingfield.com), electronic artist



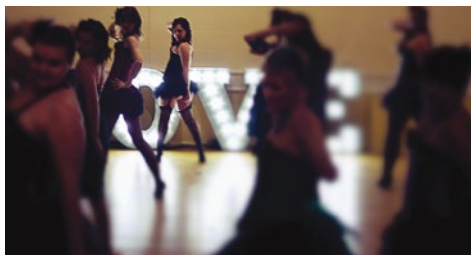
Take a Trip to the Moon with St Neots Film Club

Laica (www.facebook.com/laicamusic) and Love's Farm House's very own Ben Pitt. There'll be a chance for everyone to join in too so bring your instruments! Films include *Le Voyage dans la Lun* (A Trip to the Moon) by Georges Méliès (1902) and *Un Chien Andalou* by Luis Buñuel and Salvador Dalí (1929). £2.50 entry. Visit www.facebook.com/StNeotsFilmClub for more information.

An Evening of Burlesque

Friday 2nd December, 8-11pm

Join K Dance and Fitness at Love's Farm House for a night of dress up, giggles and seductive dance moves. Learn two Burlesque dances and some cheeky



Learn some Burlesque moves with Katy and Katrina

Burlesque techniques. Dress to impress: corsets, stockings and heels (or whatever you feel comfortable in). No experience required but you must be female and over 18 to come to this event. Tickets must be bought in advance at classes or by emailing kdanceandfitness@gmail.com.

New Groups at Love's Farm House

Zumba

Monday 12 December, 7-8pm

Zumba is a Latin-inspired dance fitness class. Cardio-based workout with sculpting exercises designed to burn calories and tone the entire body. The first class on 12 December is a free taster, with weekly classes starting on 9 January. £5 per class or £25 for a block of six. Contact Nicola Ashby on 07912 442622 or nicola_ashby7@outlook.com.

Women's Institute

Wed 18 January, 8:30-10:30pm

The Love's Farm Ladies is Love's Farm's new WI group. Come to make friends and do something new. Contact Phyllis Brooks on 01480 380240 or email phylbrooks@live.co.uk for more details.

Your Time to Grow – The Bird Table Taster Sessions

Wed 14 December, 7:30/8:30pm

Give yourself two hours a month to think, to have space to air your ideas and concerns, to learn about your strengths and motivations, all in a

safe, non-judgemental environment. Charlie will be leading two 60-minute Bird Table taster sessions, providing an opportunity to progress your thinking on a current business idea or career-related challenge or opportunity. Special price for the taster session is £20. Call 07791 767654 or email charlie@yourtimetogrow.com to book.

St Neots Sewing Club

Monday 12 December, 7-9pm

A fortnightly club for enthusiastic sewers of all abilities who would like to learn more about their sewing machines, or just come and share their expertise. The group meets 7-9pm every other Monday at Love's Farm House. Bring whatever project you are working on. £4 per

The St Neots Players Presents
Bob Hammond's
The Eighth Voyage of SINBAD
CHRISTMAS PANTO!
AT THE
PRIORY CENTRE
ST NEOTS
15th - 17th DECEMBER
TO BOOK TICKETS
stneotsplayers.co.uk
OR CALL
01480 388922

session payable on the night. Places are limited so please call Jonathan on 07827 819639 or message www.facebook.com/stneotssewingclub to book.

Brain Up Abacus Mental Maths Mondays 5pm-6pm

Brain Up is a unique mental maths programme offering to help children excel at mental arithmetic. It uses both traditional and multimedia teaching methods in order to stimulate both sides of the brain using visualisation of the abacus. Tuition is in small groups and the programme is suitable for children aged 5-13 years. Contact Abi Bodede on 01234 930160 or info@brainup.uk for more information and to book.

St Neots Bake Off

11, 12, 19, 25 February 2017

St Neots Bake Off is coming to Love's Farm House in February for four days of learning and baking. The complete programme will be available shortly via facebook.com/lovesfarmhouse. Email Damian@chefconsultant.co.uk for more information and to book.

Jess and Jules' Interiors Workshops

Make a Lampshade Create a bespoke lampshade with professional tuition from Jules Woodmore. Workshops on Wednesday 7 December and Wednesday 25 January 9.30am to 12pm. This one-day workshop costs £39 to £47 depending

on your choice of lampshade kit.

Transform Your Dining Chairs for Christmas Join the interiors experts at Jess and Jules on a two-day course dedicated to giving your dining chairs a makeover ready for Christmas. Their professional tuition will take you through the process of stripping down your chair, preparing and painting woodwork and then reupholstery of your chosen fabric. Monday 5 and Monday 12 December 9.30am-12pm. £99 for the two-day course. Visit www.jessandjules.co.uk or or email studio@jessandjules.co.uk for more information and to book.

Coffee Mornings and Bar Nights

Come to at Love's Farm House on Tuesdays 9am-12:30pm for tea, coffee, cake and company, served by our fabulous volunteers. On Fridays 9-11am we do a breakfast menu – bacon butties, pastries and more.

Our foyer area turns into a bar every Friday evening, and there's always something happening to keep you entertained.

On 2 December we have a Burlesque dance evening hosted by K Dance and

Fitness (sorry chaps, women only). 9th is our karaoke night. On 16th there's live music and classic films with St Neots Film Club. On Friday 23rd we'll have some festive drinks and music to get us firmly in the mood for Christmas.



Community Meetings

LFCA holds monthly meetings at Love's Farm House on the third Wednesday of the month (although not in December so the next one will be 18 January). Everyone is welcome, whether you have a question or issue or you just want to meet people and find out more about Love's Farm.

We've also started hosting informal get-togethers on Friday evenings at the Love's Farm House bar. It's a chance for LFCA committee members, street reps and anyone else to meet, exchange ideas and make plans. Keep an eye on the LFCA website and Facebook page for the next one.

Breakfast Church

Sun 25 December, 10 - 11:15am

Breakfast Church will meet on Christmas morning at Love's Farm House for a light seasonal breakfast and a chance to sing some carols and ponder the story at the heart of Christmas. The whole family is welcome whether you've been before or not – just come as you are, dress

up or dress down – jarmies, jumpers or shepherd and angel costumes will all be acceptable! Visit www.facebook.com/lovesfarmchaplain for more info.

Advent through Art

Sunday 4 December, 7.30pm

You are warmly invited to Love's Farm House to share a glass of mulled wine, some mince pies and conversation with local artist and theologian Neil Thorogood. He will help us to think about the season of Advent and the journey toward Christmas through art. The event has been organised by the Breakfast Church team, is free and open to everyone. For more info contact Helene on community.chaplain@yahoo.co.uk or 07938 803501.

Advertise Here

Advertise your company or Love's Farm House event with a half-page, quarter-page or classified advert. This newsletter is sent to 1,400 homes on Love's Farm. Contact jenny@lovesfarmhouse.co.uk.

Get in touch

Ben Pitt Editor

ben.pitt@ourlovesfarm.co.uk

Marcus Pickering Chair, LFCA

marcus.pickering@ourlovesfarm.co.uk

  [ourlovesfarm](https://www.facebook.com/ourlovesfarm)

  [lovesfarmhouse](https://www.facebook.com/lovesfarmhouse)

Jenny Bishop Administrator,
Love's Farm House, 01480 262626

jenny@lovesfarmhouse.co.uk

Ben Pitt Chair, Love's Farm House

ben@lovesfarmhouse.co.uk

Helene Tame Community Chaplain

community.chaplain@yahoo.co.uk

07938 803501

What's On

December 2016

Events are at Love's Farm House **foyer**, hall or **meeting room**, or **out and about**.

Events with a * mean just turn up. For others, please book in advance. Visit www.lovesfarmhouse.co.uk or call 01480 262626 for more information.

Monday	Tuesday	Wednesday	Thursday	Friday	Saturday	Sunday
Hartbeeps 9.30, 10.30 & 11.45am Transform Your Dining Chairs 9.30am-12noon NCT Mother & Baby Yoga 1.15-2.45pm Abacus Mental Maths Tuition 5pm-6pm	* Farm House Coffee Shop 9am-12.30pm Baby Sensory Christmas Parties 10.15am, 12pm, 1.45pm * BPHA drop in 3-5pm Pilates 6pm, 7pm, 8pm * LF Runners 8pm @ MUGA	Hartbeeps 10am, 11am Lampshade Workshop 9.30am-12noon * Love's Farm Starlings (with Health Visitors) 1.30pm-3pm	* Switch Cafe 10am-2pm * Little Loves 9.30am-11am Rainbows 5-6pm Brownies 6-7.30pm Guides 7.30-9pm King's English School 7.30-9.30pm	* Switch Cafe 10am-2pm Junior Youth Club 6-7pm * Karaoke at the Farm House Bar 7.30pm-12am King's English School 7.30-9.30pm	* Lazy Breakfast 9-11am Rosettes 9.30am-10am Jr Street Dance 10am-10.45am Intermediate Street Dance 10.45-11.30am	Life Drawing 9am-11.30am * Love's Farm Dog Walk 9.30am at the Pirate Ship * Kidz & Sibz 3.30pm-5.30pm * Advent Through Art 7.30pm-9pm
Hartbeeps 9.30, 10.30 & 11.45am Transform Your Dining Chairs 9.30am-12noon NCT Mother & Baby Yoga 1.15-2.45pm Abacus Mental Maths Tuition 5pm-6pm St Neots Sewing Club 7-9pm * Zumba 7-8pm	* Farm House Coffee Shop 9am-12.30pm Pilates 6pm, 7pm, 8pm * Loves Farm Runners 8pm @ MUGA	Hartbeeps 10am, 11am * Love's Farm Starlings 1.30pm-3pm Your Time to Grow Tasters: Women in Business 7.30pm-8.30pm Mums' Development Group 8.30pm-9.30pm	* Switch Cafe 10am-2pm * Rhymetime 2.15pm-2.45pm Rainbows 5-6pm LFCA Carol Singing 6pm	* Switch Cafe 10am-2pm Junior Youth Club 6-7pm * Farm House Bar 7.30-11pm * St Neots Film Club: Silent Film Live Music 7.30pm	* Nia 8-9am * Lazy Breakfast 9-11am Rosettes 9.30am-10am Jr Street Dance 10am-10.45am Intermediate Street Dance 10.45am-11.30am	* Breakfast Church 10-11.30am <i>Love's Farm House is available for private hire at weekends. Call 01480 262626 or visit www.lovesfarmhouse.com</i>
Hartbeeps 9.30, 10.30 & 11.45am NCT Mother & Baby Yoga 1.15-2.45pm Abacus Mental Maths Tuition 5pm-6pm	* Farm House Coffee Shop 9am-12.30pm * BPHA drop in 2-5pm * Loves Farm Runners 8pm @ MUGA	* Love's Farm Starlings (with Health Visitors) 1.30pm-3pm	* Christmas Cheers at the Farm House Bar 7.30-11pm	* Christmas Cheers at the Farm House Bar 7.30-11pm	* Breakfast Church 10-11.30am Happy Christmas!	
<i>Love's Farm House office closed</i>	<i>Love's Farm House office closed</i> * LF Runners 8pm @ MUGA	<i>Love's Farm House office closed</i>	<i>Love's Farm House office closed</i>	<i>Love's Farm House office closed</i>	Nia 8-9am New Year's Eve Party 7pm - late	