

Love's Farm
Community Association



Annual General Meeting 2014

Welcome!

What we'll be doing tonight:

- Introductions
- Presentation - the past year & a look ahead
- Election of officers and committee
- Love's Farm Community Champion Awards
- Discussion

Love's Farm
Community Association



Introductions

- LFCFA officers
- Some guests
- Community Chaplain - Helene Tame



Overview

- We set ambitious goals and achieved most of them
- We can do more - but **we all need to get involved!**



Street Reps

- Street reps are a link between your street and LFCA
- They exist to ensure issues affecting your street are properly addressed
- Launch tonight



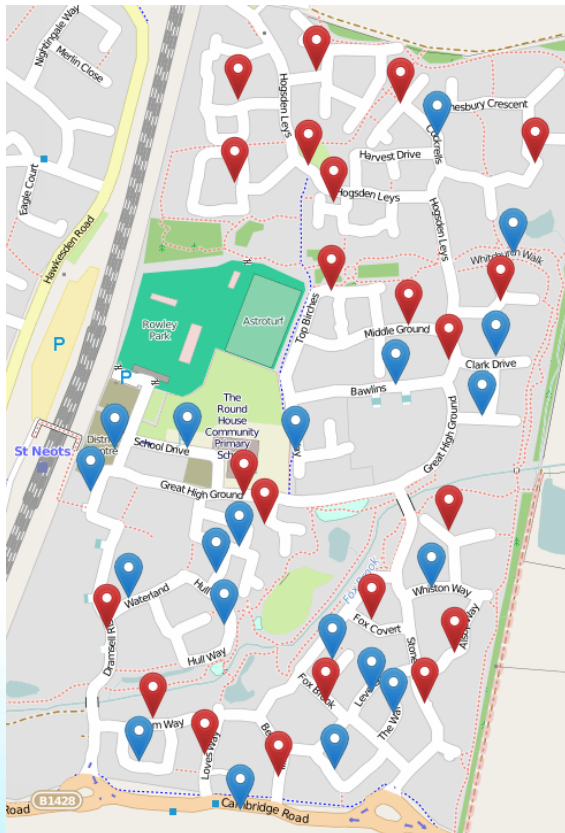
Street Reps

Our goals:

- 75% of streets represented by a Street Rep
- Development-wide Neighbourhood Watch scheme up and running



Street Reps



- How did we do?
 - Just over 50% but...
 - Population coverage greater than this
 - Neighbourhood Watch on hold until 2015



Street Reps

What's next?

- Communicate contact details
- Resources for Street Reps
 - Contacts
 - Welcome pack for new residents
 - Ideas
- Neighbourhood Watch



Street Reps

How can you get involved?

- **Be a Street Rep**

LoveYourStreet@ourlovesfarm.co.uk

- **Get to know** your Street Rep and give them:

- Practical help
- Ideas for ways to improve your street

Love's Farm
Community Association



SMART



Our goals:

- Increase participation
- Cover the whole estate in 1 year

Love's Farm
Community Association



SMART

How did we do?

- We did it!
- 8 SMART days
- 10-14 bags collected each outing, almost half recycled
- Lots of youngsters involved



SMART

How can you get involved?

- **Come along** to a SMART day
 - Next one is Saturday 25th October, 11am-1pm or 2pm-4pm. Meet at the Pirate Ship
 - Free pizza from Frankie & Benny's + refreshments!
- **Pick up** rubbish when you see it
- **Teach** your kids to do the same



Multi-Use Games Area (MUGA)



- Vandalism, litter and anti-social behaviour
- Sides already removed from shelter



Multi-Use Games Area (MUGA)

What we have done:

- Daily litter picking
- Initiated meeting between police, youth workers, Tesco, Hunts District Council, BPHA and others



Multi-Use Games Area (MUGA)

How can you get involved?

- **Be vigilant and report** anti-social behaviour to the police (101)
- **Encourage** your kids to put their litter in the bins



Responsible Dog Ownership

Issues:

- Dog fouling, dogs out of control

Our goal:

- Develop a visible campaign to promote responsible dog ownership



Responsible Dog Ownership

How did we do?

- Little progress because...
- No volunteers



Responsible Dog Ownership

How can you get involved?

- We need volunteers (esp dog owners) to take action
 - Posters
 - Spray painting
 - Reporting
- Be responsible



Parking



Issues

- Commuter parking near station
- Match-day parking
- Irresponsible/inconsiderate parking by residents



Parking

Our goal:

- Form a working group to promote responsible parking by residents and tackle the issue of commuter and match day parking



Parking

How did we do?

- Some discussions with Gallagher and councils on restrictions near the station
- Initiating discussions with police
- Gathering evidence
- Too few volunteers for real action



Parking

How can you get involved?

- **Park** considerately
- **Gather** detailed evidence
- **Volunteer** for a working group



Northern Access



Our goal

- Work with our local councillors to reach a final agreed position

Love's Farm
Community Association



Northern Access

How did we do?

- Reached a conclusion



Shops



- Pharmacy
 - LFCA campaign generated 60+ messages of support
 - Shop fitting underway
- Leonardo's open
- Fish & chips on hold



Community Centre

Our goals:

- Work with relevant authorities to ensure construction can start
- Complete charity commission registration
- Appoint trustees



Community Centre

How did we do?

- Construction due to start in a few weeks.
- Love's Farm Community Centre CIO.
- Three founding trustees, more lined up.



Love's Farm House



Love's Farm House



Hall (161m²)

Seating area (47m²)

Kitchen (18m²)

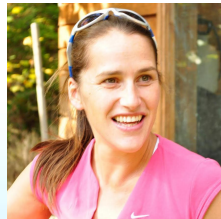
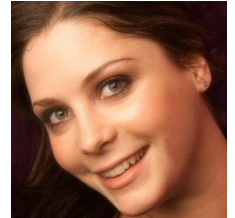
Meeting room (20m²)

Office (13m²)

Love's Farm
Community Association



Love's Farm House: Our Team



Love's Farm
Community Association



Love's Farm House: To Do

Predicted fixed costs
Identify and collate info on funders
Identify and collate info on donors
Evidence of need
Fundraising strategy
Sustainability: 5-year projected figures
Environmental impact statement
Monitor predicted income and costs
Unrestricted fundraising
Update and finalise business plan
Kitchen design
Choose kitchen appliances
Interior design
Landscaping the garden
Choosing furniture and equipment
Overseeing build process
Conflict of interest policy
Signing up trustees

Finalise building specification
Terms of lease
Hire contract
Set hire prices
Policies and procedures
AGM
Accountant and/or software
Utilities (elec, water, phone/net)
Insurance
HMRC and payroll
Holiday and pension policies
Appoint staff: cleaners, bar/cafe staff
Entertainment license
Alcohol license
Caretaker schedule
Website design
Logo and other graphic design
Booking and payment system

Schedule regular users
In-house sessions
Cafe menu, prices, suppliers
Bar menu, prices, suppliers
Advertising
Press liaison
AV spec, purchase, installation
IT spec, purchase, installation
Buy and install furniture
Launch festival: fundraising
Launch festival: sponsors
Launch festival: curating



Youth

Our goals:

- Secure funding to continue the youth club for another year
- Form a committee to take over running of the youth club and facilitate future work and activities with young people



Youth

What we have achieved...

- £5k secured
- Transition from YSP to LFCA management
- Increased membership
- Storage
- New partnerships & initiatives



Youth

How you can get involved...

- Volunteers needed
- Spread the word
- youthclub@ourlovesfarm.co.uk

Love's Farm
Community Association



Events

Our goals:

- Organise at least one event per quarter
- 100 or more people in attendance at the Big Lunch
- Publicise 2 or more events to the wider St Neots area



Events

What we have achieved...

We have held some new events and activities that have proved popular...

- Massive Easter Egg Hunt
- The Big Commonwealth Hunt
- The Scarecrow Festival



Due to the great support and feedback all will be returning in 2015!



Events

We had a lovely day for The Big Lunch 2014!...



Love's Farm
Community Association



Events

Coming up...

- Virtual Pumpkin Festival 2014
20th - 31st October
- Christmas Shopping Evening
Thursday 27th November
- Quiz Night - The last Friday of each month.
Apart from Oct - Friday 24th as clashes with Halloween!



ff



Love's Farm
Community Association



Events

Finally....

A BIG Thank You
for your support
& getting involved
this year so far....!



Love's Farm
Community Association



Website - www.ourlovesfarm.co.uk



The screenshot shows the homepage of the Love's Farm Community Association website. At the top is a navigation menu with links for Home, Love's Farm, News, Events, Street Raps, Gallery, Forums, About LFCA, and My Area. Below the menu is a banner image of a residential street with houses and trees, with the text 'Love's Farm Community Association' overlaid. The main content area is divided into several sections: a welcome message, a 'Login' box, a 'Latest News' section with several news items, an 'Events' section with a list of upcoming events, and a 'Forums' section with recent forum posts. At the bottom left, there are social media icons for Facebook and Twitter. At the bottom right, there is a logo for 'Love's Farm Community Association' with a small illustration of houses.

Home | Love's Farm | News | Events | Street Raps | Gallery | Forums | About LFCA | My Area

Welcome to Love's Farm St. Neots

Find out what's happening, get information about the development, and see why Love's Farm is the place to live in St Neots!

Please register on the site to contribute to the forums and to receive regular email updates, or get in touch.

Latest News

- Thimblebark Coffee Morning Advice for coping with ageing and disability...[Read more](#)
- Leonardo's Pizza and Cafe Opening on Thursday 25th September...[Read more](#)
- Cleaner vacancy at Round House garage/shed
Cleaner required to work 12.5 hrs per week, term time only...[Read more](#)
- Brown Tail Moths Infestation Caterpillars spotted on bushes again...[Read more](#)
- Love's Farm Wander Start the week with a walk...[Read more](#)

Events

- Love's Farm Quiz Night 7:40pm Friday 28 September Roundmen's Bar, St Neots VC
- Love's Farm Wander 12:00pm Monday 29 September St Neots Football Club
- Intergenerational Event 1:00pm Wednesday 1 October St Neots Youth Football Club
- St Neots Thimblebark Coffee... 11:00am Saturday 4 October Church Walk by Centre
- Cafe Church 4:00pm Sunday 5 October Round House Primary Academy
- LFCA Annual General Meeting 7:00pm Friday 17 October Gregory Suite, St Neots VC

Forums

- Recently Charles Church have received a request from...
- enicoloco, Mon 22 Sep, 1:46pm
- Charles Church ignore Environmental health nuisance noise request.
"Hi there - is your filing cabinet still for sale as..."
- Helena Tams, Thu 10 Sep, 5:24pm
2 drawer filing cabinet
- "As far as I am aware they haven't yet submitted any..."
- Marcus Polking, Wed 7 Sep, 8:04pm
- New Phase of Rose Acres
"I've have a set of 8 vinyl v-10 dumbbell weights, 2 x..."
- Jenny, Tue 16 Sep, 4:27pm
- Set of 8 vinyl dumbbell weights

Login

Good evening, Marcus

Web Office
Logout
Update your profile

Love's Farm Map
Click here to view »

facebook | twitter

Love's Farm Community Association

Our goals:

- Committee profile pages
- Improved information for residents
- Increase registrations and visitors

Love's Farm
Community Association



Website - www.ourlovesfarm.co.uk

How did we do?

- Still no committee profiles (sorry!)
- Continue to improve and add information
- Over 600 registered members

Love's Farm
Community Association



Website - www.ourlovesfarm.co.uk

What's next?

- Changes to forums
 - Residents-only area
 - Real name posting
- Residents-only street reps contact details
- Mobile friendly design



Website - www.ourlovesfarm.co.uk

How can you get involved?

- **Keep us posted**
 - News
 - Groups, events
- **Provide feedback**
 - What's missing?
 - Anything out of date

Love's Farm
Community Association



Newsletter



Our Community Champions



You are invited to our Annual General Meeting, 17 October, 19:00, St Neots Football Club. The evening includes FREE WINE, displays of local community initiatives and our Love's Farm Champion Awards.

Love's Farm photos

Do you have photos of Love's Farm that you can send us? We're putting together a slideshow for the Love's Farm Community Association AGM and we'd like to include your photos. It could be anything related to Love's Farm - people, events, buildings, wildlife, sunsets, gardens, pets, diggers, pizzas... If you don't mind us using them at the AGM (and possibly on the website too) please send them to us.

SMART day – 25 October

Meet at the Pirate Ship, 11:00-13:00 and/ or 14:00-16:00. Come and join in. Help us clear any unwanted 'street decorations from our Neighbourhood'.

Recipes needed!

Work is soon to start on the "Village Green" area - the green open space next to Hogsden Leys. This will be a green area with seating and attractive paths with fruit trees. Hunts District Council are installing "interpretation boards". The council are inviting us to submit our favourite recipes using the fruit for use on the boards. The trees will be:

- Apple (Cox's)
- Plum (Victoria)
- Pear (Conference)

Please submit your recipes to us by the end of October.



Come and find out more about fostering

Open Evening

15th October 2014 5pm - 8pm
Fosterplus, 2 Commissioners House, Station Road, Biggleswade, Bedfordshire, SG18 8AA.

Recruitment Event

22nd November 2014 10am - 1pm
Tesco Community Hall, 15-18 Viking Way, Bar Hill, Cambridge CB27 8EL.

T: 01767 600 471
e: info@fosterplus.co.uk
www.fosterplus.co.uk

Our goal

- Deliver to every home in alternate months and electronic version in between
- Make financially sustainable

Love's Farm
Community Association



Newsletter

How did we do?

- Successfully delivered each month
- First sponsorship this month
- Increased number of distributors
- Better promotion through website and Facebook



Newsletter

How can you get involved?

- Sign up to ensure you receive the electronic edition
- Give feedback
- Send articles



Get stuck in!

- Join an existing initiative
- Start something new!
- Join the committee if you'd like to
- How?
 - Talk to one of us tonight
 - Get in touch through the website or chair@ourlovesfarm.co.uk



Elections

Officers

- Chair, Vice-Chair, Secretary, Treasurer
- Each requires a 'proposer' and 'seconder'
- Vote if needed



Elections

Committee

- Take names today
- First committee meeting

**Wednesday 12th November 2014, 7.15pm
at Tesco Community Room**

Love's Farm
Community Association



Love's Farm Community Champions

- Honouring the unsung heroes in our community



Love's Farm Community Champions

Good Neighbour

Claire Price

Love's Farm
Community Association



Love's Farm Community Champions

New Venture

Caroline Henderson

Love's Farm
Community Association



Love's Farm Community Champions

Green Fingers

Tsjitske Dotinga-Tubbs

Love's Farm
Community Association



Love's Farm Community Champions

Newsletter Ninja

Max Hooper

Love's Farm
Community Association



Love's Farm Community Champions

Attendee of the Year

Sam Claussen

Love's Farm
Community Association



Love's Farm Community Champions

Outstanding Contribution

Philip Gibbs

Love's Farm
Community Association



And finally...

Prize draw!

Love's Farm
Community Association



Discussions

- Love's Farm House
- Parking
- Responsible dog ownership
- Youth
- SMART
- Street Reps
- Meet councillors and PCSOs
- Accounts

